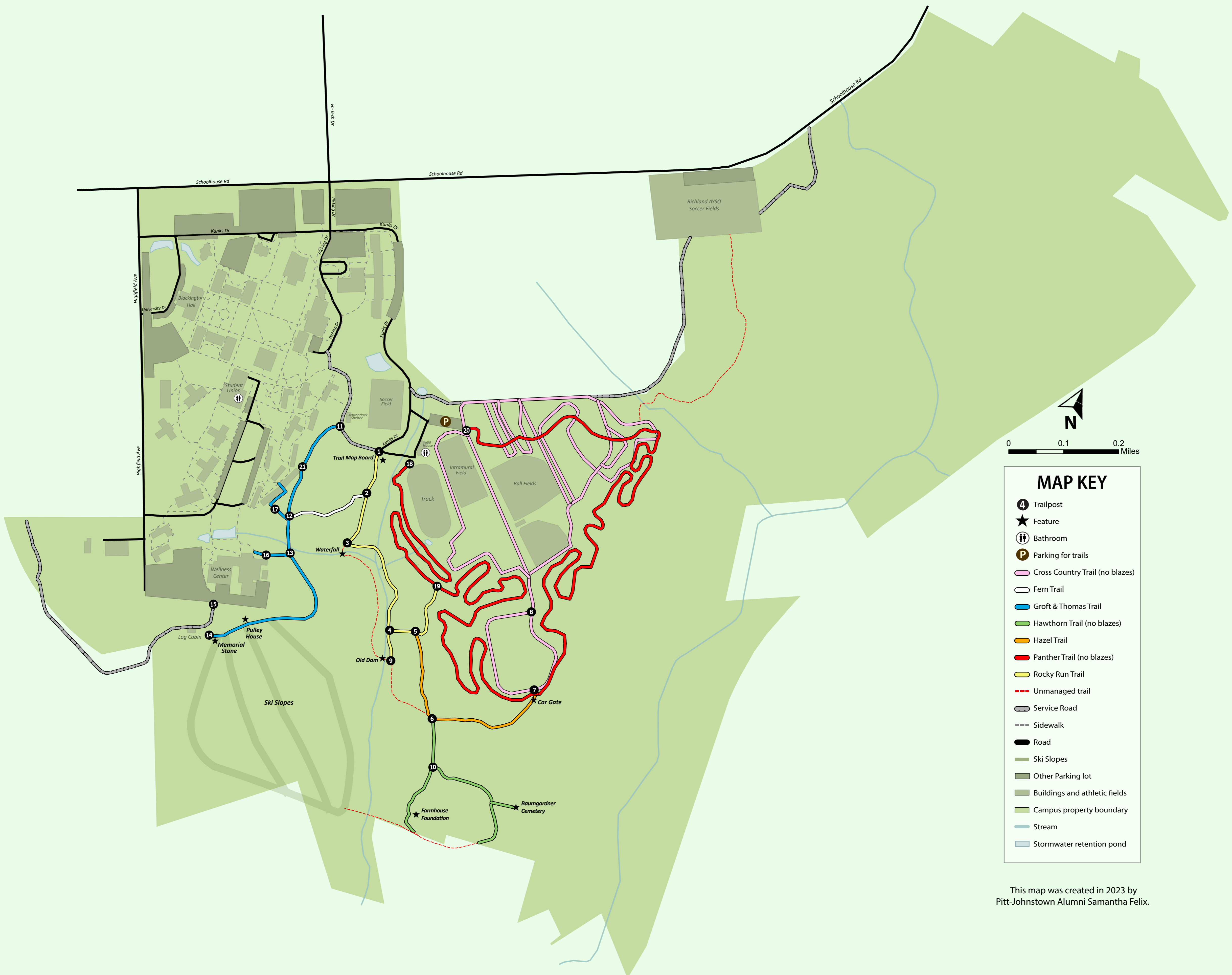


PITT-JOHNSTOWN TRAIL SYSTEM



MAP KEY

- Trailpost
- Feature
- Bathroom
- Parking for trails
- Cross Country Trail (no blazes)
- Fern Trail
- Groft & Thomas Trail
- Hawthorn Trail (no blazes)
- Hazel Trail
- Panther Trail (no blazes)
- Rocky Run Trail
- Unmanaged trail
- Service Road
- Sidewalk
- Road
- Ski Slopes
- Other Parking lot
- Buildings and athletic fields
- Campus property boundary
- Stream
- Stormwater retention pond

This map was created in 2023 by Pitt-Johnstown Alumni Samantha Felix.

TRAIL INFORMATION

- Cross Country Trail - no blazes - 2 mi - beginner** - A wide, mowed grass and gravel path that runs through sections of maintained wildflower prairie and forest. This trail is used by the cross country team.
- Fern Trail - white blazes - 0.13 mi - beginner** - A gently sloping forest trail that connects Groft and Thomas to Rocky Run.
- Groft and Thomas Trail - blue blazes - 0.51 mi - beginner** - A memorial trail with a wide dirt and gravel path that is well shaded by trees with little elevation changes. This path may form ponds and mud patches after it rains.
- Hawthorn Loop - no blazes - 0.45 mi - intermediate** - An inclined loop that runs through a grove of hawthorn trees, a wild blackberry grove, and a flower meadow. It offers access to the Baumgardner Cemetery and Farmhouse Foundation. This trail tends to become overgrown in the summertime and does not have blazes, but you may see trees painted purple to indicate that hunting is prohibited.
- Hazel Trail - orange blazes - 0.3 mi - intermediate** - A mossy, wide connector path with a steady incline. The trail is named after the abundance of witch hazel, a native understory tree that blooms in late fall, along the trail.
- Panther Trail - no blazes - 3 mi - intermediate** - Three mile intermediate loop consisting of flowy rocky singletrack, rock features with short punchy climbs, through tall trees with a rolling open field section.
- Rocky Run Trail - yellow blazes - 0.45 mi - intermediate** - This trail guides the user along a steep hillside and streambank with some significant but manageable elevation changes, and includes a waterfall, stream crossing, and access to the Old Dam.
- Unmanaged Trails** - A collection of paths that have not been named nor are they maintained. They may be overgrown.

TRAIL FEATURES

- Baumgardner Cemetery** - A family cemetery consisting of over 85 graves. Traditional tombstones mark 14 graves, and the others are marked by field stones. Please do not move any stones as they may be grave markers.
- Car Gate** - A gate to keep vehicles from entering the nature area. Just walk around this gate to access Hazel Trail.
- Farmhouse Foundation** - The stone foundation and ruins of the Baumgardner's farmhouse.
- Groft and Thomas Memorial Stone** - A memorial stone for Jonathan Lee Groft and Kevin William Thomas, two Pitt-Johnstown students who shared a love for mountain biking.
- Old Dam** - A stone dam created by Dr. Idzkowsky and students in the 1960s with the goal of creating a small pond out of the stream. The dam has since collapsed, but one section of it remains.
- Pulley House** - An old building that used to serve as the lift system for the ski slopes.
- Trail Map Board** - You are here right now. It is a trail map sign of the campus property and was dedicated to Dr. Idzkowsky, who was instrumental in creating many trails on campus.
- Waterfall** - A waterfall that flows after rainfall.

TRAILBLAZES

As of 2023, only 4 trails have trailblazes - Fern, Groft & Thomas, Hazel, and Rocky Run.

Blazed trails have trees along the trail painted with the same color as on the map.

TRAILPOSTS

ROCKY RUN TR. Blazed trails will have the color of the blaze underneath the trail name.

Arrows indicate the direction of the trail.

OLD DAM Each number on the map corresponds to a physical trail post labeled with the same number.

Trailposts are marked with a number and a colored crosshair.